

PARTS MANUAL

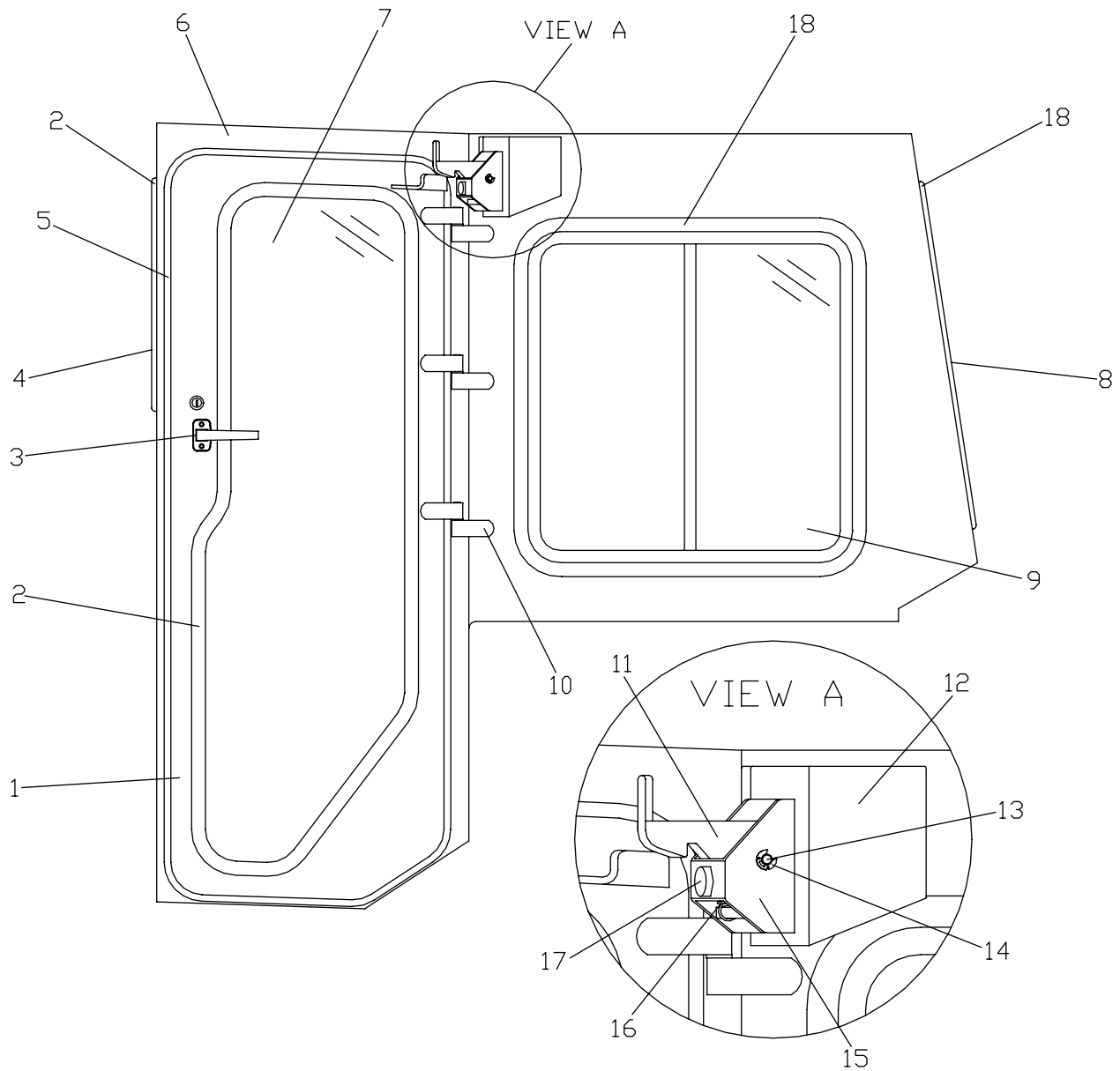
D4H & D5H SOFT CAB-22F

22F 98001- UP

DIAMOND MFG. INC.

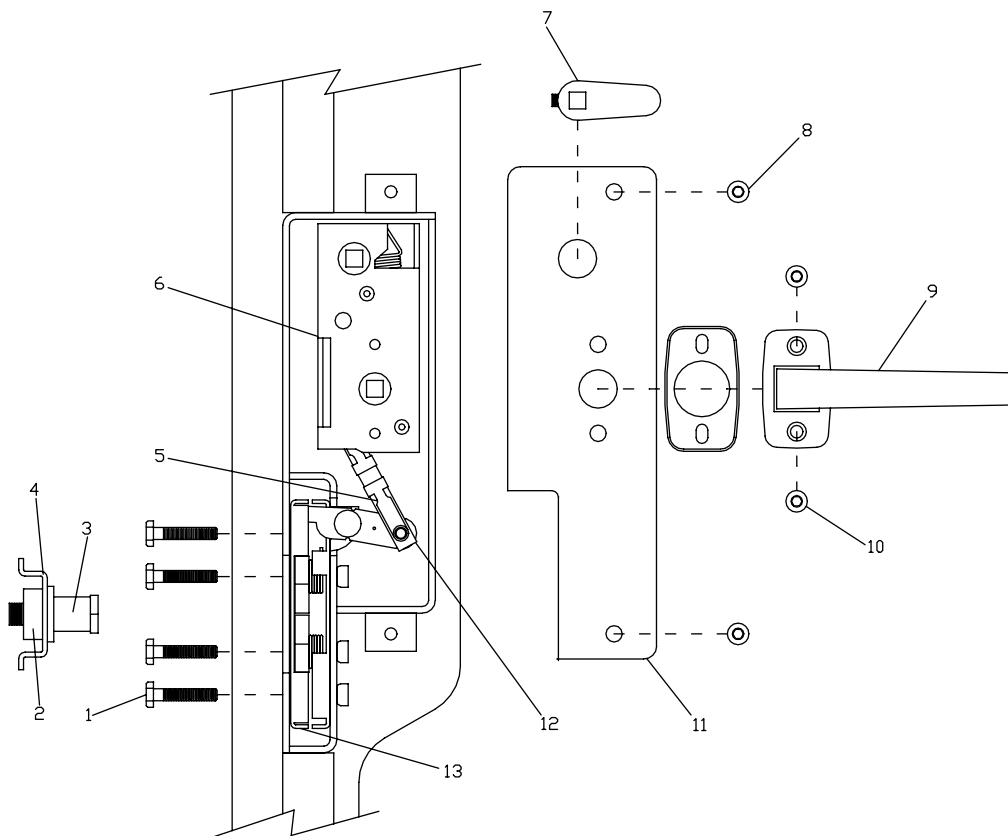
APRIL, 2005

D4H &D5H SOFT CAB-22F



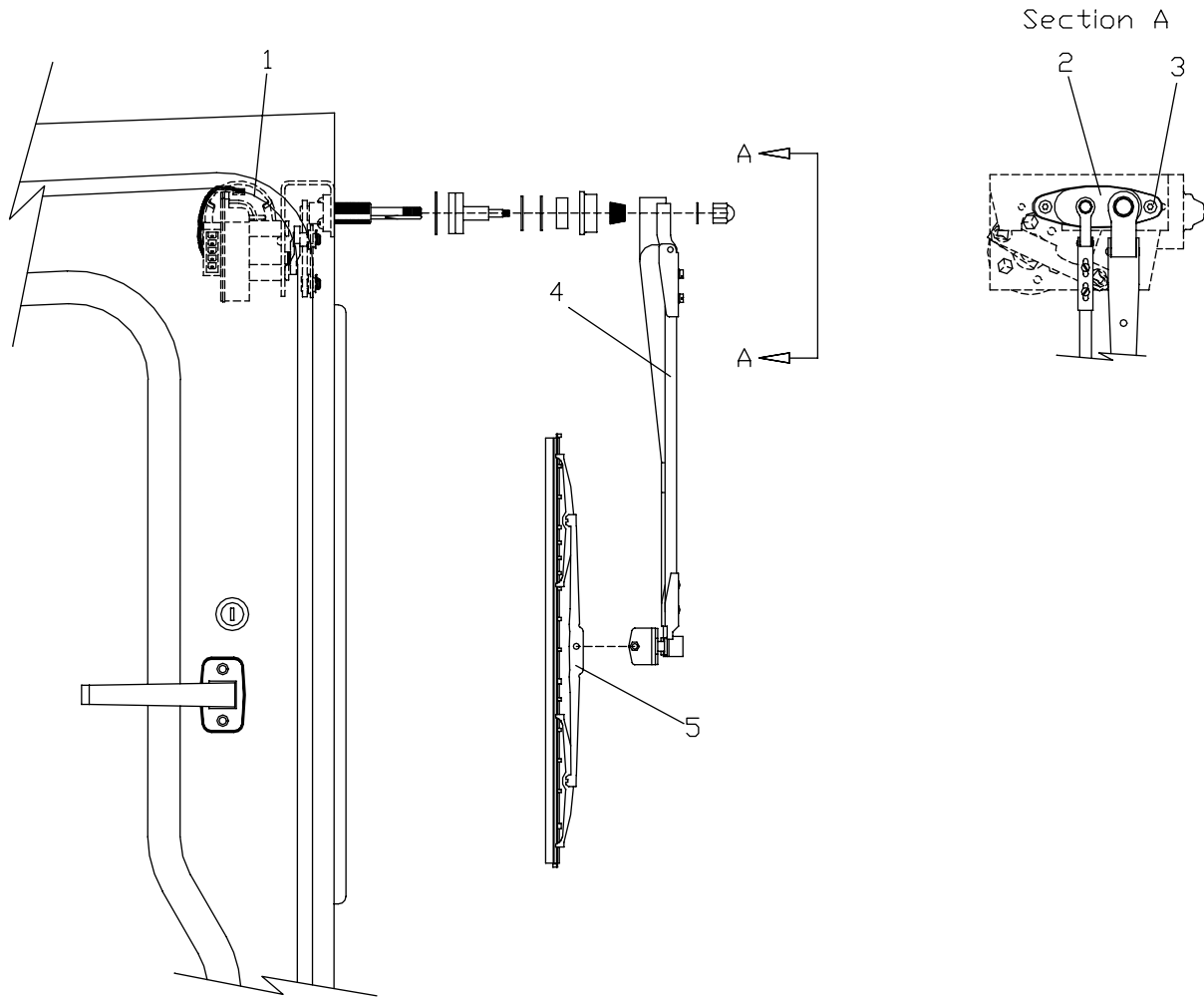
REF	QTY	PART #	DESC
1A	1	22FLD	LEFT HAND DOOR
1B	1	22FRD	RIGHT HAND DOOR
2	1	1660	WINDOW RUBBER (<i>SOLD BY THE FOOT</i>)
3A	1	5006234	OUTSIDE HANDLE
3B	1	91802A540	SCREWS
4	1	22F02GL	FRONT GLASS
5	1	6100BE	BUBBLE SEAL (<i>SOLD BY THE FOOT</i>)
6	1	22FBC	BASE CAB
7	2	22F01GL	DOOR GLASS
8	1	103F01132	REAR SLIDER
9	1	103F01131	LEFT AND RIGHT HAND SLIDER
10	6	2B	HINGE ASSEMBLY
11	2	3T5031D	CATCH
12A	1	LBLH	LEFT HAND LATCH BRACKET
12B	1	LBLH	RIGHT HAND LATCH BRACKET
12C	4	3/8"X5/8"	FLANGED HEAD BOLT
13	2	LPIES	PIN
14	4	98420A134	PIN KEEPER
15	2	3T5022D	BASE
16	2	542	SPRING
17	2	9309K19	BUMPER
18	1	987	WINDOW RUBBER (<i>SOLD BY THE FOOT</i>)

CT STYLE DOOR LATCH



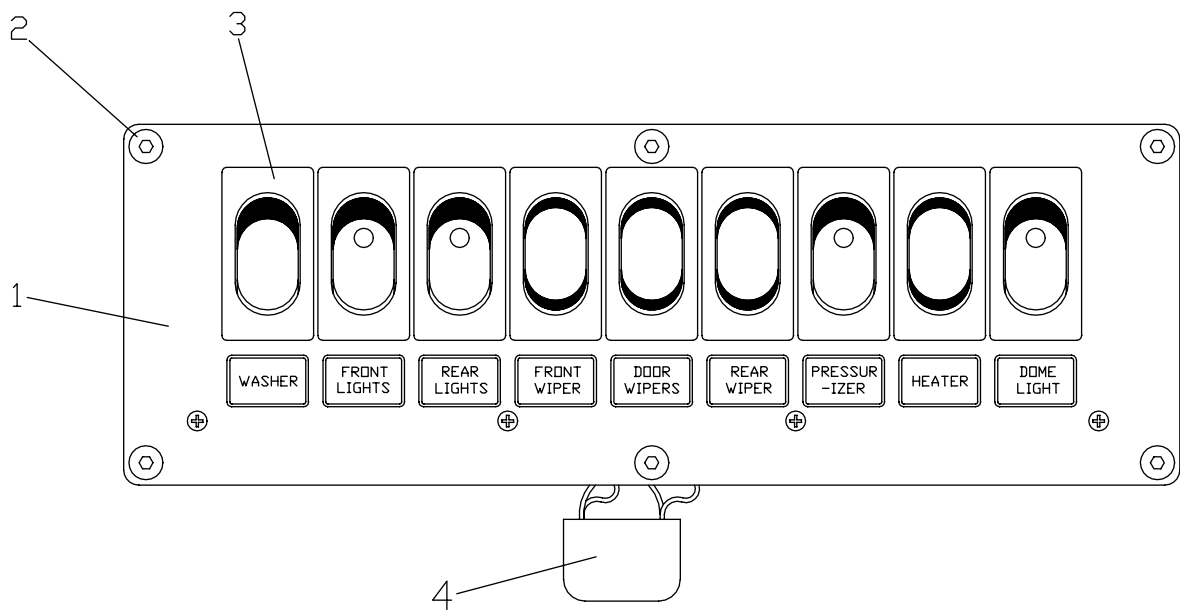
REF	QTY	PART #	DESC
1	4	1/4"X1-1/2"	BOLT
2	1	STR-325	STRIKER NUT
3	1	6V1155D	STRIKER
4	1	STR-324	STRIKER ADJUSTMENT
5	1	80989-16	CLIP
6A	1	8T1980D	RIGHT LOCKING MECHANISM
6B	1	8T1979D	LEFT LOCKING MECHANISM
7	1	C15	LOCK HANDEL
8	2	1/4"X1-1/4"	BUTTON HEAD SCREW
9	1	5006234	INSIDE HANDLE
10	2	91802A540	SCREW
11	1	8G6457D-A	COVER
12	1	80839-16	LINKAGE ROD
13A	1	6V6778D	RIGHT LATCH ASSEMBLY
13B	1	6V6777D	LEFT LATCH ASSEMBLY

24HT WIPER ASSEMBLY



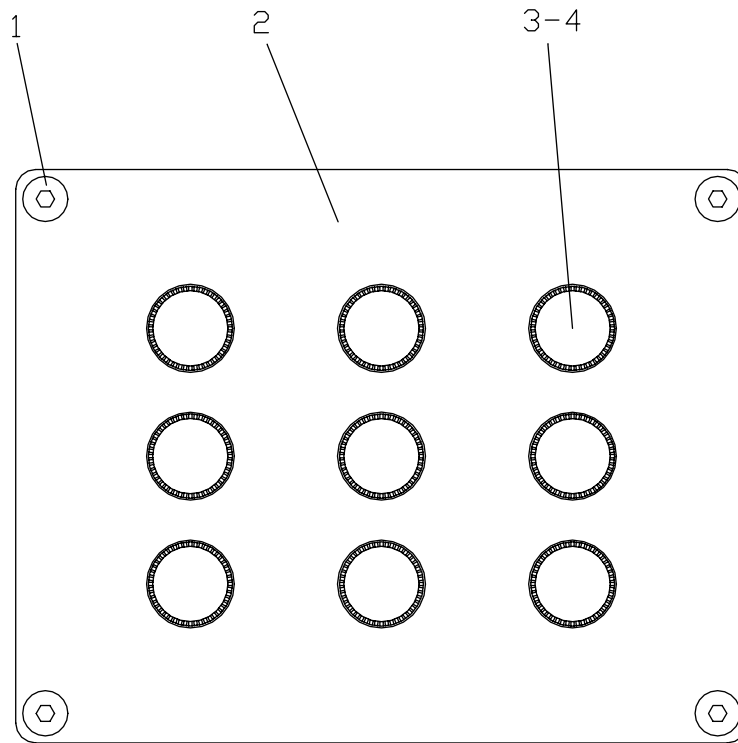
REF	QTY	PART #	DESC
1	1	3T0180D	24V WIPER MOTOR ASSEMBLY
2	1	KT48519	PANTOGRAPH BRACKET
3	2	3/4"X3/4"	BUTTON HEAD SCREWS
4	1	LE67023	PANTOGRAPH
5	1	BD52169	14" WIPER BLADE

SWITCH PANEL



REF	QTY	PART #	DESC
1	1	DMATBSW09A	GANG PANEL
2	6	10-24x1/2"	SCREW
3A	TBD	DMZ2N90RED	ON- OFF
3B	TBD	DM9WASW	MOMENTARY ON- OFF
3C	TBD	DMZ2N9037	HI- OFF- LO
3D	TBD	DMZ2N90BNK	BLANK
4	1	DNZ0N05071	24V- 12V INVERTER

GLASS FUSE PANEL



REF	QTY	PART #	DESC
1	12	10-24	BUTTON HEAD SCREWS
2	3	DMATNFUB9A	9 HOLE FUSE PANEL
3	TBD	4K-5122D	HOLDER-A
4	TBD	30 AMP	GLASS FUSE
	TBD	20 AMP	GLASS FUSE
	TBD	15 AMP	GLASS FUSE

DIAMOND MANUFACTURING, INC.

LIMITED WARRANTY

Limited Warranty

This limited warranty covers defects in materials or workmanship only. Diamond Mfg. will repair or replace any parts, which are found to be defective in materials or workmanship for a period of **six (6) months** from the date of shipment from the factory. The defect must occur during normal use of the product within the warranty period. SHANKS ARE EXPRESSLY EXCLUDED FROM THIS LIMITED WARRANTY AND ADDRESSED IN A SEPARATE WARRANTY.

Limitations

This Limited Warranty outlines specific legal rights. Diamond Mfg. does not authorize any person to create for Diamond Mfg. any obligation or liability other than stated in this Limited Warranty. This warranty gives you specific legal rights, and you may also have other rights which vary from state to state.

NO OTHER WARRANTIES, EXPRESS OR IMPLIED, INCLUDING WARRANTIES OF MERCHANTABILITY AND FITNESS FOR A PARTICULAR PURPOSE SHALL BE APPLICABLE TO ANY PRODUCT SOLD HEREUNDER.

TO THE EXTENT PERMITTED BY LAW, DIAMOND MFG. DISCLAIMS LIABILITY FOR ANY SPECIAL, INCIDENTAL CONSEQUENTIAL, OR PUNITIVE DAMAGES, LOSS OF TIME OR PROFITS, DIRECT, INDIRECT, GENERAL OR SPECIAL DAMAGES ARISING OUT OF ANY BREACH OF WARRANTY, EXPRESS OR IMPLIED. SOME STATES DO NOT ALLOW THE EXCLUSION OR LIMITATION OF INCIDENTAL OR CONSEQUENTIAL DAMAGES, SO THE ABOVE LIMITATION OR EXCLUSION MAYNOT APPLY TO YOU.

Customer Responsibility

It is the customer's responsibility to maintain the equipment in accordance with the instructions provided in the Operator's Manual. Diamond Mfg. recommends that you keep records and receipts; you may be asked to prove that the maintenance instructions have been followed.

It is also your responsibility to operate the equipment in a safe manner, and for the use for which it was designed. If a defect in materials or workmanship occurs, it is your responsibility to cease operating the equipment until repairs are made. **Damage, which occurs from continued operation, is not be covered by this warranty.** You should contact Diamond Mfg. or your authorized Diamond Mfg. dealer immediately so that repairs can be made in a timely manner.

This Warranty Does NOT Cover Damages Caused By:

- Abusive operations
- Misuse or neglect
- Natural calamities or accidents
- Unauthorized modifications
- Neglected Maintenance
- Unapproved attachments
- Usage contrary to the intended purpose

This Warranty Does NOT Cover:

- Pickup or delivery of the equipment or product
- Installation or other labor charges
- Rental of replacement equipment during the repair period
- Freight charges for replacement parts
- Travel time or mileage
- Component parts that are not manufactured by Diamond Mfg.

How to Obtain Warranty Service

To obtain warranty service under the terms and conditions of this Limited Warranty, you must deliver the product to Diamond Mfg., PO Box 270, Atoka, OK 24525 (transportation and insurance prepaid) or to an authorized Diamond Mfg. dealer, within the warranty period, along with proof of purchase. If you have questions, please call Diamond Mfg. at (580) 889-6202.

Governing Law. ANY AND ALL ACTIONS ARISING OUT OF THE SALE OF THIS PRODUCT OR THE ACCOMPANYING WARRANTY SHALL BE GOVERNED BY AND CONSTRUED IN ACCORDANCE WITH THE LAWS OF THE STATE OF OKLAHOMA AND THE APPLICABLE LAWS OF THE UNITED STATES OF AMERICA WITHOUT REGARD TO CONFLICT OF LAW PRINCIPLES.

Any action or proceeding under or in connection with this product or the accompanying warranty may only be brought in the District Court of Atoka County, Oklahoma.