



HS43 Installation Instructions

Fits Dressta TD15M

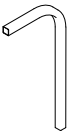


Parts List:

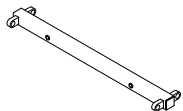
- Fasteners (Grade 8)
 1" x 5" Bolt (10 pcs)
 1" Lock Nut (8 pcs)
 1" Flat Washer (2 pcs)
 1" Lock Washer (2 pcs)
- SP0114 Front 4 x 4 Sweep Arm (2 pcs)



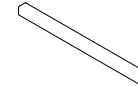
- SP0115D Rear 4 x 4 Sweep Arm (2 pcs)



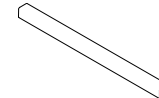
- SP0120 Top Cab Mount (1 pc)



- SP0116 3" Short Cross Tube (1 pc)



- SP0117 3" Long Cross Tube (1 pc)



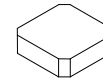
- SP0119 Lower Cab Bracket (2 pcs)



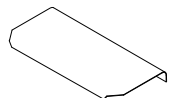
- SP0118 Hard Nose Bracket (2 pcs)



- 00613104 4" Weld Plate—1" (4 pcs)



- 01513002 Rear Cab Protection Plate (1 pc)



- 01513001 Top Cab Protection Plate (1 pc)



- SP0002 U-Bracket (4 pcs)



- SP0015 4" Weld Pad—3/8" (4 pcs)



- 9S5187D Rubber Mount (8 pcs)



- 8P5244D Rubber Washer (16 pcs)



Before you begin:

- **This Hood Sweep Kit requires cutting and welding.**
- **It is the installer's responsibility to verify final functionality of all doors and openings before welding the kit solid.**

Tools Needed

- Lifting Device
- 1-1/2" Wrenchs (2)
- Cutting Device
- Welder

- Tape Measure
- Level
- Rubber Mallet
- WD-40 (recommended)

**Always follow tool manufacturer's instructions for use*

Assembly

- Tack weld each Hardnose Bracket (Part# SP0118) on the machine's hardnose at **36"** center to center. (See Figure 1)



Figure 1

- Tack weld each Lower Cab Bracket (Part# SP0119) onto lower rear of cab. (See Figure 2) Place them 3" below top of fuel tank guard at 68-1/2" center to center.



Figure 2

- Bolt the Top Cab Mount (Part# SP0120) to the front of the machine's rollbar. (See Figure 3) (Flush side to rollbar) Use
 - (2) Bolts 1" x 4-1/2"
 - (2) 1" Flat Washers
 - (2) 1" Lock Washers



Figure 3

- Using a rubber mallet, insert a Rubber Mount (9S5187D) into the (4) Top Mount Bracket stobs, (2) Hardnose Bracket stobs, & (2) Lower Cab Bracket stobs.

****NOTE*****It is recommended that each Rubber Mount be sprayed with WD-40 before insertion.*

- Bolt a U-Bracket onto the Hardnose Bracket, as seen on top right side of this page (1*), using:
 - (1) 1" x 4-1/2" Bolt
 - (1) 1" Lock Nut
 - (2) Rubber Washers (8P5244D)
 *place washers inside the U-Bracket

****NOTE*****Above list is for all U-Bracket assembly.*

- Lift one Front Sweep Arm (SP0114) into position
- Tack weld the 4" Weld Pad—3/8" thick (SP0015) to the lower Front Sweep Arm.

- Tack weld the U-Bracket to the above weld pad. (See Figure 1)
- Bolt another U-Bracket to the Top Cab Mount stob which corresponds to this Sweep Arm. (Use previous fastener list)
- Adjust the hoist or forklift to align the Front Sweep Arm to horizontal.
- Working at cab end of tube and using the previously attached U-Bracket, the Front Sweep Arm, and a 4" Weld Plate—1" thick (00613104), align U-Bracket and determine cutting point and mark.
- Cut the Front Sweep Arm to fit.
- Tack weld Sweep Arm, to 4" Weld Plate—1" thick to U-Bracket. (See Figure 4)



Figure 4

- Repeat these steps to attach the other Front Sweep Arm.



Figure 5

- Place the Top Cab Protection Plate (01513001) on top of Front Sweep Arms.
- Align the Plate edges to the center of the Arm tubing.
- Leave 1/4" between Top Cab Protection Plate & Bolts that hold on Top Cab Mount. (See Figure 6)



Figure 6

- Tack weld the Plate in place starting at the rear and working forward while continuing to ensure center tube alignment.
- Make Front Sweep Arms parallel with Top Cab Protection Plate. (See Figure 7)

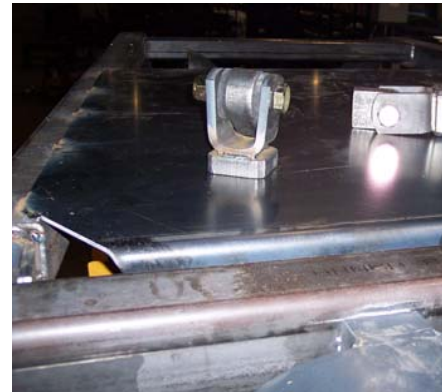


Figure 7

- Place Long Cross Tube (SP0117) between Front Sweep Arms with the front of Top Cab Plate running down the middle of cross tube.
- Trim, as needed & tack weld.
- Place Short Cross Tube (SP0116) in front of exhaust stack between Front Sweep Arms.
- Trim, as needed & tack weld.

Final alignment of Cross Tubes. (See Figure 8)



Figure 8

- Using the hoist or forklift place a Rear Sweep Arm (SP0115) into position.
- Bolt on a U-Bracket to Lower Cab Bracket.

- Adjust the hoist or forklift to align the Top Cab Protection Plate to be level with the top of the Rear Sweep Arm.
- Working at lower end of tube and using the previously attached U-Bracket, the Rear Sweep Arm, and a 4" Weld Plate—3/8" thick (SP0015), align U-Bracket and determine cutting point and mark.
- Cut the Rear Sweep Arm to fit.

****NOTE**** Placement of bracket may cause cutting to be unnecessary.

- Tack weld Sweep Arm, to 4" Weld Plate—3/8" thick to U-Bracket, as on hardnose. (See Figure 9)



Figure 9

- Bolt another U-Bracket to the Top Cab Mount stob which corresponds to this Sweep Arm.
- Working at top end of tube and using the previously attached U-Bracket, the Rear Sweep Arm, and a 4" Weld Plate—1" thick (00613104), align U-Bracket and determine cutting point and mark.
- Cut the Rear Sweep Arm to fit.

- Tack weld Sweep Arm, to 4" Weld Plate—1" thick to U-Bracket, as done to Front.



Figure 10

- Repeat these steps to attach the other Rear Sweep Arm.
- Place the Rear Cab Protection Plate (01513002) on top of Rear Sweep Arms.
- Align the Plate edges to the center of the Arm tubing.
- Leave 1/4" to 1/2" between Rear Cab Protection Plate the Top Cab Mount. (See Figure 6)
- Tack weld the Plate in place starting at the rear and working forward while continuing to ensure center tube alignment.

****NOTE**** Proper alignment should have tubing at 68-1/2" center to center.



Figure 11

- Assess proper alignment of sweep and functionality of all tractor parts.
- Secure the entire tack welded Sweep Kit to the hoist or forklift.
- Remove all fasteners.
- Lift Sweep Kit off of machine and into a position that will allow ease of welding.
- Weld all tack welds completely using at least a 1/4" fillet weld.

Thank you for your purchase.

- Allow welds to fully cool.
- Replace the Sweep Kit onto the machine with the hoist or forklift.
- Bolt securely into place. (Refer to above steps, as needed for proper assembly.)



**Any questions or comments can be directed to
1-800-445-1917**

