



HS49 D6N EROPS Installation Instructions

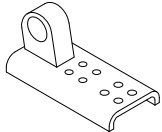


Tools Needed

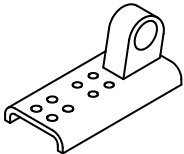
- Forklift or Overhead Hoist
- 1-1/2" Wrench (2)
- 16MM Wrench (1)
- 24MM Wrench (1)
- Rubber Mallet (1)

Parts List

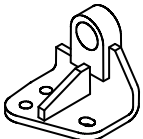
- 2253597D LH Cab Bracket (1)



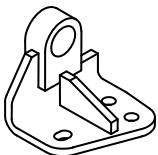
- 2253596D RH Cab Bracket (1)



- SP0063 LH Hard Nose Bracket (1)



- SP0088 RH Hard Nose Bracket (1)



- SP0135 Sweep Body (1)



- MK0028 Mount Kit

- 1" x 4-1/2" Bolt (4)
- 1" Lock Nut (4)
- 16MM x 40MM Bolt (6)
- 16MM Flat Washer (6)
- 10MM x 30MM Bolt (8)
- 10MM Flat Washer (8)
- 3/8" x 1" Bolt (8)
- 3/8" Lock Washer (8)
- 9S5187D Rubber Mount (4)



- 8P5244D Rubber Washer (8)



**All fasteners are Grade 8*

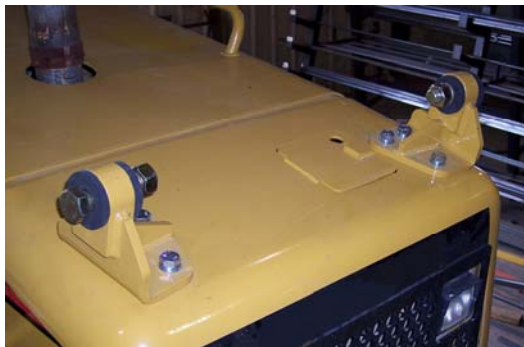
Installation

- Bolt 2253597D LH Cab Bracket & 2253596D RH Cab Bracket to Cab Roll Bar structure using 16MM Wrench (1), 10MM x 30MM Bolts (8) & 10MM Flat Washers (8). See Picture Below...



**Note optional Light & Light bracket has been bolted to Cab Brackets above which can be done using 9/16" Wrench (1), 3/8" x 1" Bolts (8) & 3/8" Lock Washers (8) supplied.*

- Bolt SP0063 LH Hard Nose Bracket & SP0088 RH Hard Nose Bracket to Hard Nose structure using 24MM Wrench (1), 16MM x 40MM Bolts (6) & 16MM Flat Washers (6). See Picture Below...



- Insert 9S5187D Rubber Mounts (4) into Cab Brackets & Hard Nose Brackets using a rubber mallet as seen below...



- Lift the SP0135 Sweep Body with a hoist or overhead lift over the tractor & align with all 4 brackets and bolt to Cab Brackets and Hard Nose Brackets using 1-1/2" Wrench (1), 1" x 4-1/2" Bolts (4), 2" Lock Nuts (4), 9S5187D Rubber Mounts (4) & 8P5244D Rubber Washers (8). See 2 Pictures below...



- Tighten all bolts securely.