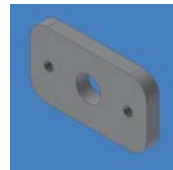




# HS69 D6K SERIES 2 TIER IV FINAL Installation Instructions



- PHS6003 Sweep Cab Mount Plate (2)



- PHS69001 Front Sweep Body (1)



- SP0142 Rear Sweep Body (1)



## Tools Needed

- Forklift or Overhead Hoist
- 5/8" Wrench (1)
- 5/8 Inch Wrench (1)
- 16MM Wrench (1)
- Rubber Mallet (1)

## Parts List

- PHS69002 RH Hard Nose Bracket (1)



- PHS69003 LH Hard Nose Bracket (1)



- MK121 Mount Kit
  - 5/8" x 3" Bolt (2)
  - 5/8" Lock Washer (2)
  - 16MM x 50MM Bolt (6)
  - 16MM x 80MM Bolt (6)
  - 16MM Lock Washer (12)
  - 16MM Flat Washer (6)
  - 16MM x 30MM Bolt (4)
  - 16MM Flat Washer (4)
  - 16MM Lock Washer (4)
  - CBA24-650-1 Rubber Mount (8)



- CB1123W Compression Mount Metal Washer (8)



*\*All fasteners are Grade 8*

## Installation

- Bolt PHS69002 RH & PHS69003 LH Hard Nose Bracket to Hard Nose structure using 16MM Wrench (1), 16MM x 50MM Bolts (6), 16MM Lock Washers (6) & 16MM Flat Washers (6). See Picture Below...



- Lift the PHS69001 Front Sweep Body with a hoist or overhead lift over the tractor & align with 2 Hard Nose brackets & cab. Bolt Front Sweep Body to Hard Nose Brackets using 5/8" Wrench (1), 5/8" x 3" Bolts (2), CBA24-650-1 Rubber Mount (2) & CB1123W Compression Mount Metal Washer (2) on the Hard Nose end use. See Pictures Below...



- Bolt PHS69001 Front Sweep Body directly to cab end using 16MM Wrench (1), PHS6003 Sweep cab mount plate (2), CBA24-650-1 Rubber Mounts (2), CB1123W Compression Mount Metal Washers (2), 16MM x 80MM Bolt (2) & 16MM Lock Washer (2). See picture below of the underside view of the Front Sweep Body...



- Bolt Front Sweep Body to both Spacers using 16MM Wrench (1), 16MM x 30MM Bolts (4), 16MM Lock Washers (4) & 16MM Flat Washers (4). The Spacer has tapped holes.



- Lift the SP0142 Rear Sweep Body with a hoist or overhead lift over the tractor. Bolt Rear Sweep Body directly to cab using 16MM Wrench (1), CB1123-2 Rubber Mount (4), CB1123W Compression Mount Metal Washer (4), 16MM x 80MM Bolt (4) & 16MM Lock Washer (4). See pictures below...



- Tighten all bolts securely.